

Catoctin Area Turners



Next meeting: Thursday, July 9, 2010, 6:30 pm
Location: Banshee Reeks Nature Preserve,
Leesburg, VA



Volume 2 Issue 7 - July 2010

Summer Fun

Our picnic didn't get canceled for a blizzard or even rained on. As a matter of fact, it turned out to be a beautiful day. We had about 20 members accompanied by their spouses and families. I'm sure glad that the picnic occurred when it did as the warm weather and especially the humidity has certainly been impacting our area recently. The

Contents

Page 2
Call of the Lathe
Page 3
Upcoming Demos
CAT Officers
Page 4
Editor's Bench
Page 6
Woodcraft Contest
Page 7
Safety
Page 8
Arborist
June Meeting
Page 9
Mentoring Program
Page 10
Odds and Ends
Page 11
Member Discounts
Page 12
AAW Tidbits
Page 13
Upcoming Symposi- ums



potluck lunch was just outstanding. Thanks to everyone who contributed to the sides and deserts. It sure was good, as a number of folks were seen making a number of trips to the buffet line.

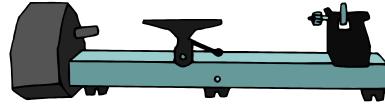
What would a gathering of woodturners be without wood to turn. Well, thanks to Tom Boley and Walt Bennett, who set up their lathes, a number of folks took turns at the lathes.



It was certainly great to get to know each other on a much more personal basis, and a great opportunity for our spouses to compare notes about their spouses addiction. So the next time our group gets together, come on out and join the fun.



The Call of the Lathe



by Tom Boley

Last month, I wrote about the weather making it so pleasant to turn in the garage but, wow, this hot spell has toasted all of us. My air conditioner in my shop has really been struggling to keep up with the outside temperature. I hope all of you are finding ways to keep cool while turning as I'd sure hate to have you have to give up turning altogether merely because of the heat.

If you weren't at the picnic last month, you missed a very enjoyable, relaxing, and pleasant day. It was warm but we were all in the shade of those big trees by the Banshee Reeks classroom and a nice breeze kept the gnats away most of the time. The food was delicious. I have always loved potlucks because everyone brings such great creations for all of us to share. Thanks to Jeff Greene for the organization for the picnic and especially to his wife, Meri, who went to Red, Hot, and Blue to pick up the barbequed pork and chicken for our lunch. There were only two mini lathes there but some of our members were able to do some turning, always a joy. We even had some new folks come and hope to see them at the July meeting.

Speaking of mini-lathes, Walt Bennett has said that he will donate his new Delta midi to CAT. It seems he had some problems with the controller so the company sent him a new one, which he installed. It works fine. The company rep came by recently to pick up the old controller so they can see what failed in it and he brought Walt a new Delta midi. Walt figured he would take the old one back but the gent from Delta said to keep it. Walt has offered it to our club. I think that is hugely generous of Walt and I very much appreciate and gladly accept his offer. What a great addition

to our equipment! Thanks, Walt.

Speaking of Walt Bennett, he was the one who brought in those mug inserts. Several of you took them and we had invited all who took them to bring them to the picnic so we could all see what you did with them. Well, no one thought of it. Let's see about having them for Show and Tell both this month, for those who have finished them, and next month for those of you who need just a little more time.

For those of you who are members of AAW, you may have heard that Mary Lacer, one of the founding members of the AAW and the Executive Director of the organization, has essentially been sacked by the Board of Directors. Two of the Board members have resigned in protest of the actions of the remaining Board members. I do not know what has happened to cause this falling out at AAW but think the world of Mary Lacer and am stunned that this has occurred. I suppose more details will filter out over time but I wanted to let you know about it in case you hadn't heard yet.

Well, time to keep moving here so I can get some breakfast and get out to the shop. The Call of the Lathe is pretty strong here on Black Oak Ridge, along with the wind, and when it calls, I listen. I love turning wood and love sharing it with others as I know you do, too. What a joy we all have in our craft. Thanks for being a part of Catocin Area Turners. You make it great!

Tom Boley

Upcoming Demonstrations

July: Patrick O'Brian of Capital Area Woodturners

He will be demonstrating one of his winged natural edge vessels that he makes from limbs. If there's time, he will do something else from limbs, like mushrooms.

He lives in Alexandria, VA and has been turning since 2001. He has attended numerous woodturning courses from many of the well known woodturners. In 2003 he opened his studio in Alexandria and recently moved to a permanent studio in Building 10 of the new Workhouse Work Center in Lorton, VA. His workhorse is a Oneway 1640 lathe. Patrick has taught woodturning fundamentals in 2007 & 2008 at the JC Campbell Folk School and currently teaches skill enhancement workshops twice a month for the Capital Area Woodturners.



Patrick certainly encourages you to visit his web site "OhBeWood" at <http://www.ohbewood.com/index.html>

August: TBD

September: TBD

CAT Officers

President

Tom Boley
540-338-1718
tboley@erols.com

Vice President

Dale Bright
540-571-9121
frog21@comcast.net

Secretary

Bob Parson
703-724-1879
rparson@gmail.com

Operations Director

Jeff Greene
703-787-1858
jeff_greene@bmc.com

Treasurer

Mark Kaplan
703-608-6914
markap6@comcast.net

Program Director

Don Maloney
540-554-8223
caffeyh@aol.com

Newsletter Editor

Ron Cote
703-444-0026
ron4519cote@yahoo.com

Support Volunteers

Burgan Pugh - Lending Library
Terry Lund - Mentors
Debbie Woods - Silent Auction
Mark Duffell - Raffle Tickets
Chet Olson - Web site/Gallery Photos
Brian Sullivan - Bulk Purchases
Jeremy Baker - Arborist Extraordinaire
Tom Boley - Newsletter Proofreader

The Editor's Bench

by Ron Cote

The 2010 Hartford AAW Symposium is now history. Other CAT members who attended this year's symposium beside myself were Bob Parson and Roy Aber. This was my first attendance to the annual symposium, and I must say, I was very impressed. I apparently wasn't the only one who thought so, as I overheard a number of folks make the comment that both the symposium and the venue, Connecticut Convention Center, was the best AAW symposium that they had ever attended.



I was immediately aware that there was a lot more than just putting a roughing gouge, spindle gouge or skewers to the wood. So, I concluded that my quest for the next three days would be to learn how some of these items are produced.



I attended the following rotations of such notable artist-turners as; Joey Richardson, Sharon Doughtie, Don Derry, Cindy Drozda, Jimmy Clewes, John and Glenn Lucas. If you were to especially google the first three above, you would see that their use of power piercing and carving tools as well as the use of color is certainly how they create and embellish their creations. One other important point that I walked away with. Each had a distinctive style, to the point that once that you have been introduced to their creations you could probably pick out their work in a gallery regardless if the pieces were displayed in Washington DC, New York or Los Angeles. Each piece being similar yet different. Take a look at their web sites and see what I mean.

As the doors opened on Friday morning I headed over to the Instant Gallery. Wow, what a display of imagination and talent. Awesome, just simple awesome! There had to have been at least 250 items on display. I really asked myself the question as to what do I have in com-



mon with these artists? Noticed that I said artist versus turners? If I ever had any doubt that I was just a beginner, this definitely put a stamp on my forehead.

Saturday evening was the banquet. What a crowd



and what a meal. I have attended many rubber chicken meals in my day at different symposiums and conventions, but this was definitely the excep-

tion. The meals started off with a waldorf salad. Each plate had both steak and salmon, mash potatoes, mixed veggies, top off with a couple of asparagus. A piece of chocolate cake finished the meal. I know that it may sound silly talking about the banquet meal but I did hear a number of folks also complement the banquet fixings the following day. Just a great start to the evening.



The final event of the evening was the Auction. It was great sport to watch as long as I was concerned. I was definitely relegated to the spectator seats. The proceeds of the auction were to help many of the members replace equipment that was recently lost in the recent Tennessee floods. There were 73 items donated for the auction. The cheapest item, I should probably say least expensive, went for \$300, and the highest bid item went for about \$5200. The grand total collected was over \$69,000. Overall, I wouldn't hesitate to attend the banquet again. I had a great time.

One very important note. Tom Boley, Terry Lund and I attended and represented CAT at the Virginia Woodturners Inc. meeting on Sunday, 27 June. The purpose of this group and meeting is to foster the ongoing efforts for a statewide woodturning symposium. See what this is all about and go to the web site for the details. <http://www.virginiawoodturners.com/>

The list of vendors who have already committed is getting impressive.

If at all possible and you intend to attend the 2010 Virginia Symposium, **please register asap.**

More information on the symposium is posted on page 12 of this newsletter.

Till next month - Keep Turning!!

Ron Cote

I had a dream



It's Woodcraft Contest Time!

The Leesburg Woodcraft Store will be hosting its second annual woodturning display and competition at the store 15 through 21 August this year. Barbara and Lee are inviting beginners and experienced turners alike to show off your favorite turned piece. Submitted pieces will be on display during the week for all to view and to vote for the Public's Pick award. This year we are expanding the judged categories to include not only the classics, but other categories such as lidded boxes, pens and other kit pieces, and more. We will also have separate categories for youth and beginner submissions.

To enter, stop by the store or send an e-mail to woodcraft327@woodva.com providing your name, phone, a description of your entry, and what category you want to enter.

(President's Note: This was a lot of fun last year. Let's really wow'em this year! All you new woodturners, now's your chance to go public with your turnings!)



Safety - Don't take it for Granted!

Safety Tips from Ohio Valley Woodturners Guild Vol 16 issue 4 American Woodturner Winter 2001

Even the most experienced turners can find themselves unexpectedly in trouble when neglecting to follow basic safety rules. Here are a few reminders to keep all your limbs and tools in one piece:

Wear protective clothing, especially safety glasses.

A dust mask or face shield gives you even greater protection from airborne particles, especially while sanding at the lathe. A powered respirator with integrated visor is the optimal piece of head protection.

Know the exact location of the OFF switch, and make it the easiest switch to reach.

Be wary of loose clothing and any part of the anatomy that could get caught up in the revolving machinery.

Make sure that all equipment has safety guards, and that guards are securely in place when equipment is in use.

Never attempt to change the positioning of the turning blank, or your tool rest, while the lathe is in motion.

Ensure that all chuck keys and external tightening handles are removed before the lathe is started.

Stand to one side whenever the lathe is started, to be out of the "line of fire" if anything flies loose.

Rotate your piece by hand through 360° to make sure it is secure, and can clear the bed ways and tool rest, before turning on the power.

Check the lathe speed before turning on the power. Start the lathe at low speed and adjust to higher speeds once the piece is revolving smoothly and in balance.

Read the instructions for any new piece of equipment before using it, and mentally walk through the process to understand it fully before touching the power switch.

Sharp tools cut best. Dull tools require more effort, and cause more injuries. Rest the tool firmly on the tool rest before bringing it in contact with the rotating surface.

Next meeting: "Thursday", July 8, 2010, 6:30 pm

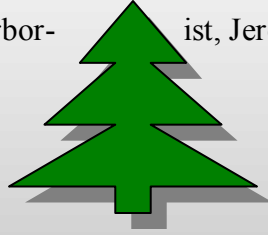
**Location: Banshee Reeks Nature Preserve,
Leesburg, VA**

This month demonstrator: Patrick O'Brian of CAW

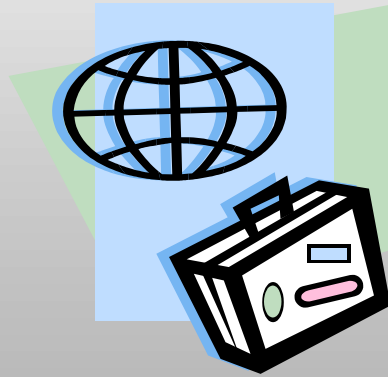
Advice from The Arborist

Jeremy Baker

Our Arbor-
next month.



ist, Jeremy, is enjoying a vacation this month and should return



June Meeting Minutes

There are no minutes for June as we held our annual picnic at Banshee Reeks Reserve.



Mentoring Program

by Terry Lund

We have established a mentoring program for CAT members, so Terry Lund is looking for volunteers to be mentors as well as requests from any of our members who would like to be paired up with a mentor in one of the following areas of interest for turning skills, or for general mentoring activity. Terry will have sign-up forms for those who want to be a mentor as well as for those who would like to be matched up with an assigned mentor at the next meeting on July 8. If you are interested in either opportunity but will not be at the meeting, please contact him via email at terry.lund@gmail.com or call him on his cell phone 585-455-2517. Please include your name, address, phone number, email address, and indicate your level of experience as Beginner, Intermediate, or Experienced when requesting a mentor.

We will try to match interested individuals with a mentor who lives “reasonably close” whenever possible, and if we get enough mentors to sign up, we will also try to match based on one of the following areas of interest, or feel free to mention another area of interest.

Areas of interest for mentoring

Functional turning	Ornaments and small items
Artistic turning	Pens and Pencils
Bowls	Lidded Boxes
Natural Edge Bowls	Segmented turning
Square Bowls	Spindle turning
Hollow forms	Turning/Chasing Threads

Odds and Ends

Photographer Still Needed

We are still in need for someone to be able to take photos at our club meetings, especially for our "Show and Tell". Jeff Greene, our club's Operations Officer, has graciously volunteered for the additional duty until someone else volunteers. So please, get involved and you too could be the next newsletter editor, I mean photographer. Isn't that right Tom??



Newsletter Submissions

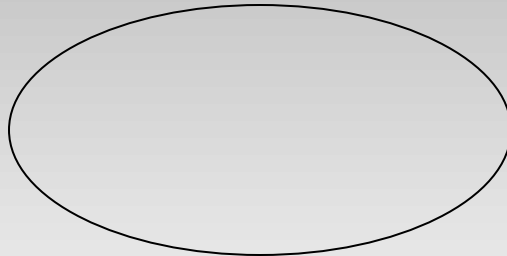
I would like to continue to encourage everyone to submit an article to the newsletter. Some subjects that could be submitted that I would think would have in interest to all, would be such things as reviewing a good turning book or DVD.

CAT Web Site

www.catoctinareturners.org

Remember to check our CAT web site from time to time for new information and the schedule of demonstrations for our meetings. Chet Olson has moved to Florida but is still our web master, for which we are very grateful. He has done a great job of getting it up and running and it is now a source of a lot of information about our activities.

Newsletter Contributions



Have Fun Turning

Member Discounts

Woodcraft of Leesburg



Leesburg Plaza

512 E. Market

Leesburg, VA 20176

Phone: 703-737-7880

Fax: 703-737-6166

Leesburg@woodcraft.com

Store Hours: Sun: 9 AM— 5 PM Thr: 9 AM— 9 PM
Mon: 9 AM—9 PM Fri: 9 AM— 9 PM
Tue: 9 AM— 9 PM Sat: 9 AM- - 6 PM
Wed: 9 AM— 9 PM

Show your CAT membership card and get a 10% DISCOUNT! Valid Thursday thru Sunday of each monthly meeting week.

Dunlap Woodcrafts

Located near the Dulles Expo Center at
14600F Flint Lee Road, Chantilly, VA 20151
Tel (703) 631-5147 Fax. (703) 631-7103

Discounts are available to CAT members

Purchase \$100 and receive a 10% discount
Purchase \$250 and receive a 15% discount
Purchase \$500 and receive a 20% discount

I would suggest that you give them a call prior to making the trip to ensure that they are open.

AAW Tidbits

Are you a member of the AAW? Well if you aren't, you might consider the following as an added incentive. Each month your name is automatically entered into a drawing.

Take a look below at this months prizes.

July 2010 drawing will be for the following prizes:

- \$100.00 gift certificate provided by D-Way Tools, <http://www.d-waytools.com/>
- \$100.00 gift certificate provided by Hunter Tool Systems - <http://www.hunterwoodturningtool.com/>
- \$100 gift certificate provided by Thompson lathe tools - <http://www.thompsonlathetools.com/>
- A five-DVD set - From the Tree to the Table, Bowl Basics, Mike Mahoney on the McNaughton Center Saver, Hollow Forms and Urns with Mike Mahoney, and Making Heir-looms, provided by Mike Mahoney, www.bowlmakerinc.com
- A 3 DVD set: "Decorative Utility Bowls", "Sculpting wood – Beyond the lathe", and "Vessels of Illusion" provided by Trent Bosch - <http://www.trentbosch.com/>
- \$100 gift certificate toward abrasives supplies provided by The Sanding Glove - <http://www.thesandingglove.com/>

Go to the AAW web site to see who were the June winners.

<http://woodturner.org/>

Symposiums

2010 Virginia Symposium

Fishersville, VA

http://www.virginiawoodturners.com/symposium/symposium_info_home.htm

2010 Virginia Woodturners: October 23 - 24

Augusta Exposition and Entertainment Center

Fishersville, VA (Expoland)

The nine woodturning clubs in Virginia are collaborating once again to produce the fourth biannual Virginia Woodturning Symposium the weekend of 23 and 24 October 2010 in Fishersville, VA, the same location as in 2008. The Virginia Woodturning, Inc, web site at <http://www.virginiawoodturners.com/> has much more information and also has a list of the motels which will offer discounts for the symposium. Making an early reservation will help VWI convince more vendors that attending and setting up at our symposium would be worthwhile. The more attendees we have, the more vendors will be willing to come. This will very much be a hands-on symposium. Save some money by sharing a motel room with a fellow woodturner.

<http://www.virginiawoodturners.com/>