



First Anniversary Party

In This Issue

Call of the Lathe.....	2
What I've Learned.....	3
Musings from the Editor...	5
CAT Club News.....	6
Latest AAW News.....	7
Tips & Tricks	8
Time with a Turner.....	10
Buy - Sell - Trade.....	14

**2 Get-Togethers
this Month**

Our Next Meeting:

**Thursday
January 14, 2010
at the beautiful
Banshee Reeks
Preserve**

AND

**Anniversary Party
January 30, 2010
at Whitestone
Farm**



The First Anniversary Party will be held at
Whitestone Farm
(22699 Whitestone Lane, Aldie VA 20105) on
January 30, 2010 from 4:00pm to 8:00pm!

There will be a **raffle for a mini-lathe** at the party. Raffle tickets will be sold for \$5 each or five for \$20. There will be a few other items raffled and even if you win one of the other items, your ticket will go back into the pot for the BIG drawing for the lathe.

To ensure we have dish variety, please bring the food item listed next to the letter corresponding with the first letter of your last name.

- A – B Bread/Rolls
- C – M Salad/Side dish
- N – R Desert
- S – Z Beverages



Main dishes, condiments and paper products will be purchased by the club. Similar to the CAT picnic, there will be no alcohol provided or consumed at the venue. If you are able to bring a large cooler or buffet warmer to the party, please let AJ know.

Please RSVP to AJ Lewis and let her know if you have any additional ideas or questions at l.adriane@gmail.com or 703-727-5244.

We hope you all can make it!

**For Directions to
Whitestone Farm,
see page 11**



What a snowstorm! I can't remember when I have last seen a white Christmas, and it almost wasn't since it has been so warm, melting so much of what fell earlier. Unfortunately, a snowstorm like that takes so much snow blowing and shoveling time that getting time to turn can be a real problem. I sure hope that you all were able to get your Christmas and other presents done before the snowstorm hit and you had to spend the rest of the time managing the white stuff.

Well, we did it. From the kernel of an idea which pretty much originated with George Carrigan and Lee Hanson, we have built a woodturning club with over 50 members to serve woodturners living out here in Loudoun County and the surrounding area. This process has not been without considerable time and effort by many of you to make it all work. Thanks to all of you for your willingness to take on officer positions, to take on volunteer positions for so many other tasks like librarian and raffle coordinator, and for your willingness to just be members and find Banshee Reeks Nature Preserve each month in order to attend the meeting to improve your skills and knowledge about the craft. This has been a great year for all of us and I applaud all of you for your membership and

your attendance. Thank you.

We will be entering the New Year with two new officers on the Board. One is Don Maloney who has had years of experience in woodturning as well as interacting with many skilled and well known woodturners. Don will serve as our Program Director, finding and scheduling demonstrations for our monthly meetings and, when appropriate, workshops by our demonstrators. Debra Breton has already taken on the daunting task of Newsletter Editor and this newsletter is her first product. There is no doubt that she will do a great job and I welcome her wholeheartedly into the fold. Thanks to both Don and Debra for your willingness to do these jobs for CAT. And, of course, one last fond thank you to Dave Martin and Bob Peesel who have so valiantly performed the tasks of Program Director and Newsletter Editor for our first year. You were instrumental in making CAT a success and we appreciate it so much.

This first month of our second year we will meet twice. The first will be our regular meeting on 14 Jan. The second will be on 30 Jan at Whitestone Farm for our anniversary celebration. That will be a potluck dinner with CAT buying the main dishes. Look for more

information in an article about that elsewhere in this newsletter.

For those of you who have been receiving the newsletter and have not joined CAT, I urge you to consider joining in January. That will give you a whole year of membership for the \$30 annual dues. For those of you who are already members, dues for 2010 will be due in January. On 15 March, anyone who has not paid 2010 dues will be dropped from the e-mail list and will no longer get either newsletters or other mailings about woodturning information. Please don't let that happen. Come on out to a meeting and join us as we turn and learn together.

Winter can be a tough time to turn wood as so many shops are in the garage or even an unheated outbuilding and it is just too darn cold to spend much time there. If any of you just HAVE to turn some wood and can't take the cold, come on over to my place. I have heat and an extra lathe which you are most welcome to use if you clean up afterward! When the Call of the Lathe sounds in the winter, I can offer a warm place to work. And I'd welcome the company.

Tom

Use sandpaper as if someone else is buying it. Don't be cheap, throw away sandpaper that is old or clogged. (worn out 100 grit does not become 150)

You've got to pay the dues...

Your CAT dues that is...

Send your check to :

Mark Kaplan
12013 Canter Lane
Reston, VA 20191

or see Mark at the meeting

Creativity is allowing yourself to make mistakes. Art is knowing which ones to keep.
- Scott Adams

What I've learned – month five

The holiday season was a busy turning time for me, so many gifts, sooo little time. Unfortunately I didn't get to do any turning in November nor the first part of December because I was one of the lucky ones that caught the swine flu. The flu itself isn't bad it's the coughing, wheezing, and fatigue that seems to never go away (6 weeks in total). So the remainder of December I tried to make up for lost time, lots of wine stoppers, pens and martini shakers (my crew is a bunch of lushes - the drinking theme goes over well). Additionally I made a couple of cool pepper grinders or in our case, a pepper and salt grinder and, ha, they almost match. I guess even a blind squirrel finds a nut every now and then. I made both out of a section of donated cherry (thanks Jeremy). Speaking of donated wood, I find that I get a lot more satisfaction out of creating something from a log than processed wood although it does require a lot more work and the results are never predictable. Regarding the kit, I've tried two different designs and have found the Woodcraft 77B35 kit to be vastly superior. Something I could use help with is the finish. If anyone has a solid process for producing a durable clean high gloss finish please share.

I also have another wood to add to your must turn list -"Honduras Mahogany." it is an absolute pleasure to turn and the wood is gorgeous! I found a coating of boiled linseed oil followed with a couple coats of bee's wax makes a very nice finish, but I'd welcome other suggestions.

With the holidays behind us it's now time to start focusing on the New Year. As the ops director, I'd REALLY like us to participate in some cool events this year. Please let me know if there are charities/events that are important to you and we will rally the club for help supporting your efforts.

Happy New Year!



Upcoming CAT Woodturning DEMONSTRATIONS

JANUARY: In this month's woodturning demonstration on January 14, our very own Don Maloney will be showing us how thread chasing is done. He will show us both ways of doing this, by hand and with a jig. While not all of us have seen Don's beautiful urns with threaded finial lids, for those of us that have, he is exceptionally skilled at making these. It is sure to be a good demo.

FEBRUARY: On February 11, we'll have John Noffsinger demonstrating how to turn finials and he is a pro, with works in various galleries. To see some of John's work you can visit his website at: <http://www.johnnoffsinger.com>

MARCH: Stay tuned – as Don Maloney our Program Director, is working on getting some great demonstrations lined up...

To add events
of interest to the
Newsletter:

Please contact Deb
debra@thedeps.com
703.957.5953

This includes:
Upcoming shows, Fundraising
events, etc.

*When spindle
turning, cut
downhill or from
largest diameter to
smaller diameter as
in cutting down
into a cove instead
of from the bottom
of the cove up to
the top of it.*

One Day CAT Ski Trip



If there are enough skiers in our woodturning club and if there is enough interest, let's join together for a ski trip to Whitetail in February. We could go on a weekend, but would be lost in the crowd. It is much better to take a day off of work mid-week to go as the crowds are non-existent. Lift lines are so short you can ski down the hill and right onto the lift. You have to look around as you ski, not to keep from running into someone, but to see if there is even anyone else on the slope with you. Mid-week skiing is terrific. If you have never skied before but would like to give it a try, you are also most welcome as Whitetail has a special deal for first-timers. We can talk about this more at the January meeting or even at our anniversary party on the 30th, but if you think you would be interested, please e-mail Tom Boley at tboley@erols.com to indicate your interest.



Musings from the Editor

By Debra Breton

Good aluminum oxide grinding wheels are not always colored White. They can be any color but most usually White, Blue, Pink or Violet.



*The intuitive mind is a sacred gift and the rational mind is a faithful servant. We have created a society that honors the servant and has forgotten the gift.
- Albert Einstein*

Woohoo!! Happy Anniversary & Happy New Year fellow turners! Thanks to all our great members, volunteers and officers who have worked so hard to bring this club to fruition, we're celebrating our one year anniversary. I know Tom Boley has worked REALLY hard to get this club going, getting a 501(c)3 status in our first year is an accomplishment in and of itself. So thank you Tom and many thanks to the folks at Woodcraft in Leesburg for their initial and ongoing support. Of course there are many others who are working behind the scenes to make this a FUN, helpful and growing organization. **Now - if we could only get that logo!**

With the New Year it seems, will come a new look to the newsletter and it will be evolving in the months ahead. A special thank you to Bob Peesel for being the newsletter editor for the past year. It's an effort to whip one of these together when you aren't busy and Bob still managed to produce a great newsletter each month despite his hectic schedule. Thanks Bob!

This month we're featuring a new column titled "Tips & Tricks for Turners" and Tom Boley has submitted the first informative article entitled "Sharpening Considerations". Since this newsletter is member driven, it would be great to get YOUR feedback and any ideas that YOU might have... What would YOU like to see as a topic we cover each month? Could it be finishes,

woods, tools, trees or any and all of these? I'm all ears! Lets really try to bring some informative content, sprinkled with humor, into our mailbox each month. AND if anyone wants to contribute a monthly article or even an "every once in a while" article for our *Tips & Tricks* column or your own monthly column, please send it in. This is such a great group of people, with many skills and talents, lets use our newsletter to share and help each other to become better turners.

Speaking of sharing and helping... Dan Rittenhouse has been working behind the scenes to put a Forum on-line. It is much like the AAW forum and soon we will be able to instantly inform each other of: tool sales or specials, downed wood, meeting and mentor updates. Or perhaps share your woodturning questions, your photos & how-to etc. It's a pretty cool way of getting LOCAL woodturning info instantly! Chet Olson has volunteered to work on creating our website. Our hope is that www.catocinareeturners.org will soon be a fully operational and informative site with the forum, galleries and archives. So stay tuned.

Looking forward to seeing you all at the Anniversary party! Have a GREAT New Year!

Till next time, let the shavings fly~
Deb :)

CAT - Club News

From the Treasury... A new year is starting so, along with filing your tax return, it's time to renew your membership in our fast growing club (preferably way before April 15). Lot's of activities and guest demonstrators are in the lineup.

So, please send your checks for \$30 (\$45 for family) to:

Mark Kaplan
12013 Canter Lane,
Reston, VA 20191

Or, bring a check to a meeting.

Thanks,
Your Treasurer

December Club Demo

As a new club, we haven't had the funds to bring in nationally known turners to demonstrate for us so have drawn on our own members to share their expertise at meetings. That has been very successful and our December program is just another example of that. Jeff Greene, our Operations Director, provided a great demo on pen-making. Jeff has really been bitten hard by the woodturning bug and has gotten quite into pen making. That has been to our benefit as he was able to share a lot of his experience in turning pens with us at our December meeting. Jeff, thanks for taking that on. We sure do appreciate your willingness to get up in front of a bunch of woodturners to talk about woodturning. Gutsy! :-)

CAT OCTIN AREA TURNERS

Officers

President

Tom Boley
540-338-1718
tboley@erols.com

Vice President

Dale Bright
540-751-9121
frog21@comcast.net

Secretary

Bob Parson
703-724-1879
rparson@gmail.com

Operations Director

Jeff Greene
703-787-1858
jeff_greene@bmc.com

Treasurer

Mark Kaplan
703-608-6914
markap6@comcast.net

Program Director

Don Maloney
540-554-8223
caffeyh@aol.com

Newsletter Editor

Debra Breton
703-406-4832
debra@thedebbs.com

Support Volunteers

Burghan Pugh - Lending Library
Terry Lund - Mentors
Debbie Woods - Silent Auction
Mark Duffell - Raffle Tickets
Debra Breton - Members Gallery Photos
Brian Sullivan - Bulk Purchases
Jeremy Baker - Arborist Extrordinaire
Tom Boley - Newsletter Proofreader

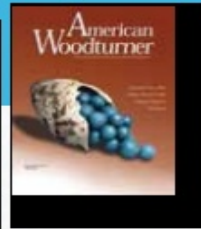
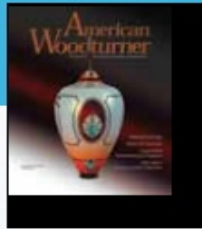
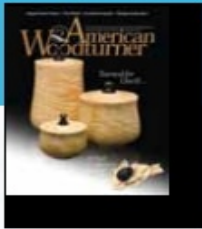


Latest AAW News

www.woodturner.org

JOIN

If woodturning is your hobby, your passion, your art, the American Association of Woodturners is for you.



Membership Benefits

In addition to the benefit of joining one of the largest craft associations in the country, currently greater than 13,500 members strong with more than 325 local chapters in the United States and internationally, each one-year membership includes:

American Woodturner

- Six issues of *American Woodturner*, official journal of the AAW, each jam-packed with
 - New one-of-a-kind projects
 - Inspiration and insider secrets
 - Time- and money-saving shop tips and techniques
 - Step-by-step instructions with helpful how-to images and diagrams
 - Beautiful color photos throughout
 - Calendar of events, seminars, and exhibitions



Bert Marsh



Rolly Munro

Education and Advice

- Annual AAW Symposium
- Expert woodturning advice at woodturner.org
- AAW Forum and members-only access on woodturner.org
- Local AAW chapters with local demonstrations, show-and-tell mentors, and tool and wood swaps
- Access to Educational Opportunity Grants for members and AAW chapters
- Biennial Resource and Membership Directory



Curt Theobald

Opportunities

- Marketing opportunities on the AAW website for artists, collectors, galleries, and museums
- Juried exhibit opportunities

Insurance and Savings

- Bodily injury liability insurance furnished for members involved in AAW activities
- Commercial property and liability insurance available for members to purchase
- Group rates for health, life, and commercial business insurance
- Discounts on AAW books, DVDs, and logo merchandise with savings up to 50%
- Access to merchandise discounts from multiple suppliers



John Jordan

Click on the link below to check out our official website!

woodturner.org

Click on the "Join AAW" link for membership information.

Or call:

651-484-9094



Helga Winter

Tips & Tricks for Turners

Sharpening Considerations

By Tom Boley

Keeping your tools sharp is essential to successful turning. I have a friend, actually a customer, who works at a wood mill as a salesman. He is just getting into turning and is able to use an old lathe and some very old tools which are in the mill on his lunch period. He asked for advice recently and I walked back into the mill with him to look at the lathe, his piece which was mounted on it, and his tools. Here is a hint – the mill has no sharpening system specifically for woodturning tools so he has been sharpening them on a belt sander. Now, that can work in some cases but not in his. He needs more help so he is coming to the shop to learn a bit more about it.

You simply must use sharp tools. You've heard the old adage that a dull tool is a dangerous tool. That is correct, but it also doesn't cut well, doesn't give a clean surface, and is harder to control than a sharp tool. With the proper equipment and set-up, sharpening can be done in 15 seconds from lathe to grinder and back. DON'T turn with dull tools!

There are multiple sharpening systems on the market, all of which work well. The one I use is a slow speed (1750 rpm) grinder with 60 grit and 120 grit wheels in conjunction with the Oneway Wolverine jig. I use the Vari-Grind jig with it for sharpening gouges. I also keep one bowl gouge sharpened by hand at 40 degrees, Stuart Batty's recommended method. That will be the subject of a different article.

For both bowl gouges and spindle gouges, I insert the gouge in the Vari-Grind jig so the end protrudes two inches. Glue a hard wood block 2" from the edge of the grinder mounting board so that you can use it to quickly set the gouge in the right position for sharpening. Using the long pocket bar with the Wolverine set-up, slide the

pocket bar out and place the point of the long adjustable bar of the Vari-Grind jig holding your gouge into the pocket. With the bevel of the tool resting on the grinding wheel, slide the pocket bar in so the bevel of the gouge exactly matches the curve of the wheel. Set the pocket bar for other tools directly without using the Vari-Grind jig. Put the end of the handle in the pocket and adjust the bar so the bevel aligns with the wheel. If you are not sure, you can mark the bevel with a black marker to see where the grinding wheel is actually grinding. Then adjust the pocket bar as needed.

Here is a helpful chart of angles for various woodturning tools. Check the angle of the bevel with an adjustable protractor and grind your tools to these angles. All are the angle of the bevel relative to either the inside of the flute or the centerline of the parting tool.

Bevel angles

Parting tools 25°

Spindle gouges 35°

Spindle roughing gouges 45°

Bowl gouges 55°

Scrapers 80°

Spindle and Bowl Gouges

Using a slow-speed grinder provides a lot of flexibility. Place the bottom end of the Vari-grind in the pocket. Grind one side of your spindle or bowl gouge, then the other side, then connect them across the point. You are looking for a slightly convex curve across the profile of the side of the grind.

Spindle Roughing Gouge

Use the pocket bar for sharpening this gouge so that you can keep the end of the gouge square and not let the wings become swept back.

Tips & Tricks continued on pg. 9

Tips & Tricks for Turners

Continued from pg.8

The reason for that is so you can use it to cut up to a shoulder at either end with the corner of the tool.

Scrapers

As noted in the chart above, the bevel angle should be about 80 degrees. Set the platform with the scraper flat on the top so the bevel of the scraper is aligned with the grinding wheel. In one smooth motion, start at one side of the scraper and grind around the end to the other side.

Skew

I grind the skew on the platform but it can also be ground using the pocket bar. Set the platform so the angle of the skew matches the wheel and grind in one smooth motion. OR, set the pocket bar so the angle matches the wheel when the end of the skew is firmly inserted into the pocket, and grind in one smooth motion. Don't go back and forth between methods as the bevels will be different for these two methods and you will cut off a considerable amount of metal to achieve an edge. Once sharpened in this manner, many skew-users will then hone the edge to achieve the smoothest and sharpest edge possible. The profile of the skew should be either straight from point to heel or slightly convex.

Parting Tool

Use the pocket bar to set the end of the parting tool so the bevel is aligned with and resting on the grinding wheel. The most critical part of this sharpening process is to be sure the end of the parting tool is square when sharpened so that in use, you will be able to cut a flat surface. With a diamond profile parting tool, be sure the point at the end of the tool is perfectly centered on the widest spot of the diamond in order to be most effective.

With this set-up, you should be able to quickly leave the lathe, sharpen the tool, and return to turning. But as you sharpen repeatedly, two things happen to the grinding wheel. It will collect metal in the grit of the wheel and will wear away wherever it is used most, generally the center. Use a diamond dresser to clean the wheel and square up the face.

I use the platform and lay the dresser on the platform with the end of the dresser against and centered on the wheel. With the grinder running, use two hands to move the dresser very straight back and forth on the platform and against the wheel to take off just enough to clean and square up the wheel.

There are many keys to success in woodturning. One is riding the bevel. Another is using sharp tools. There are others but these two are probably at the top of the list.

Hmmmm....

We hope to make "TIPS & TRICKS FOR TURNERS" a regular featured column in the newsletter. If you have enjoyed what you've read or want to contribute, then please let me know at a meeting or send an email to the editor!

Time with a Turner - Harriet Maloney

How long have you been turning?

I have been turning since about 1999. However, most of my turning has been done in the last few years and I was working more than full time up until then. Was a licensed Land Surveyor and worked for the Virginia Outdoors Association as a monitor of open space easements and helped Don a little in his turning business. All at the same time.

How much time do you spend turning?

My turning is very sporadic. Do a lot of volunteer work now and because of built-up inventory have turned less especially during the Holiday Season. Ready to turn some canes for the wounded soon and have an order for several icecream scoops.

What is your favorite type of piece to make?

Favorite piece to make? Something with which I am well pleased.

What is your most memorable woodturning moment?

Most memorable moment. Turning a large, wet piece which was not well secured and I was not wearing a face mask. The results were not pretty.

Have you entered any shows or competitions?

Have sold pieces at Aldie Art Show, Burwell-Morgan Mill Art Show, Art in the Foothills (Bluemont), Museum of the Shenandoah Valley (Winchester), Bluemont Fair, Bluemont Vineyard gift shop, Annual MMMF (charity fair at World Bank in Washington, DC). and some of my work is at the newly opening Main Street Gallery on Berryville. Won "most popular" prize for entry in the Leesburg



Woodcraft Store. Was most pleased that my platter donated to the 100 Bowls of Compassion (charity ball for Miriam's Kitchen) brought the highest price in the silent auction \$650. Actually got a call from the second highest bidder (who thought she had the bid) who wants to come and look at my work.

Continued on pg. 11

Time with a Turner - Harriet Maloney

Continued from pg. 10

Any advice for new turners?

Start slow (money-wise) as it can get expensive. I was lucky and had a husband who was already making good bucks in the architectural turning business and loves to buy tools and machinery. Pay attention to safety, use good wood, join a club and try to learn from others.

What is in your shop today?

Lots of chips and sawdust. I could not name it all. Remember my husband has been in the business for over 15 years. He says the bare basics are the lathe that suits your needs, good chucks, grinding wheels, bandsaw, and maybe 6 tools. I love the Beall buffing system and my vacuum chuck (expensive).

Where are you from?

Born in Takoma Park, Maryland in 1935, lived in DC across from Walter Reed Hospital. Moved to Round Hill, VA at age 3 or 4, and with exception of 1958-59 in Hawaii have lived in Loudoun County.

What do you, or did you do for a living?

With exception with above mentioned, various jobs:secretarial, carpenter (build several houses including 2 of my own), housewife and mother of 4 for a number of years, school bus driver and worked for the restoration of the General George C. Marshall home "Dodona Manor" in Leesburg, VA.

Directions to the Anniversary party on January 30, 2010

To Whitestone Farm from the east

Find Aldie on a road map. You can get there from the east easily by taking Rt 50 west from Rt 28 or wherever you can access it. If you are closer to Leesburg than Rt 28, take Rt 15 south from Leesburg and then turn west on Rt 50. Aldie is only a short distance west of 15 on 50. Go through Aldie but watch your speed. The speed limit is 25 and they do watch it. When you exit Aldie to the west, turn right (north) on Snickersville Turnpike just past the edge of town. Go about a mile, maybe less, and watch for Whitestone Farm on the right. Turn into that road, Whitestone Lane, and follow it back toward the big barn ahead on the left.

To Whitestone Farm from the west

Get to Snickersville Turnpike and go southeast. As you drive, watch for Carter's Farm Lane on the right, then Cobb House Road on the right, and finally Oatlands Road on the left. Whitestone Farm is the next place you will get to. Turn left and go to the large barn ahead and to the left. If you come out on Rt 50, you missed it. Go back up Snickersville Turnpike about a mile.

Develop Your Talents

The John C. Campbell Folk School

Located in way western North Carolina, the John C. Campbell Folk School offers an amazing array of classes in such widely diverse subjects as nature, blacksmithing, knitting, painting, photography, woodworking, pottery, cooking, and of course woodturning. There are about 50 categories of classes. That is CATEGORIES with each category having as many as several dozen individual classes available. Classes are of three types, Sunday to Friday, Sunday to Saturday, or weekend. They are not inexpensive but they are full time for while you are there and many even meet in the evenings, too, depending on the instructor. I have attended two classes at JCCFS and love the place. It is like summer camp for adults. Lodging is excellent and the meals are outstanding. Food is served family style at tables of eight and you bus your own dirty dishes and serving dishes when finished. Whoever takes the serving dishes back to the kitchen brings the dessert back! The woodturning classes used to share space with the other woodworking classes but now there is a dedicated woodturning studio and it is an excellent facility designed to provide an outstanding learning environment for students.



I recently contacted the Folk School to ask for some catalogs to provide to “my woodturning club members” and they were kind enough to send a whole case of them. I’ll have them at the January meeting. First, look at the table of contents and you will see page after page of classes. They are listed alphabetically by category. Find a woodturning class you like in that list and go to the page indicated for a description of the class. That page will list titles and descriptions of all the classes offered that week so anyone else who may go with you can see what else is offered which may be of interest. For example, I have signed up for a woodturning class in August and my wife has signed up for the cooking class that same week. The cost of the class is at the bottom of that page and information about lodging costs are inside the front cover. This place is incredibly enjoyable and I especially recommend it to anyone who may be a new woodturner as there are so many options available. It’s a good day’s drive from Northern Virginia as it is way west of Asheville, located at Brasstown, NC, but well worth the long drive. Take one of the catalogs and check it out. It’s awesome!

NEED HELP with your woodturning skills? Ask Terry Lund if he can set you up with one of our volunteers from our Mentors Group!

Contact Terry Lund
terry.lund@gmail.com
1.585.455.2517

Upcoming
Woodturning demo's
& classes at the
Woodcraft in
Leesburg:

**Woodturning Demo
Saturday, January 30,
9:00 AM - 5:00 PM**

**Join us for free turning
demonstrations
throughout the day
and see the versatility
of the lathe!**

See ad on Member
Discount page for address
and phone number.

Member Discounts

WOODCRAFT® Helping You Make Wood Work®



Leesburg Plaza
512 E. Market
Leesburg, VA 20176
Phone: (703) 737-7880
Fax: (703) 737-6166
Leesburg@woodcraft.com

STORE HOURS:

Sun: 9 AM - 5 PM
Mon: 9 AM - 9 PM
Tue: 9 AM - 9 PM
Wed: 9 AM - 9 PM
Thur: 9 AM - 9 PM
Fri: 9 AM - 9 PM
Sat: 9 AM - 6 PM

Show your CAT Membership Card and get a 10% DISCOUNT! Valid Thursday - Sunday of each monthly meeting week. This month: January 14 - 17, 2010.

DUNLAP WOODCRAFTS

Since 1975

PROVIDERS OF FINE FIGURED AMERICAN HARDWOODS

BOWL BLANKS & FLITCHES
SQUARES
LUMBER
GUNSTOCKS
LUTHIER'S GRADE WOOD
Home of the \$100 deal



10% DISCOUNT with your CAT Membership Card
during January 2010

14600F Flint Lee Rd
Chantilly, VA 20151
TEL: 703.631.5147
FAX: 703.631.7103

dunlapwoodcrafts.com
dunlapwdcrafts@aol.com

Buy - Sell - Trade

For Sale: Craftsman 6hp 33gal compressor with 25' of new hose never been opened 3/8po type \$190
Contact Dick Krehling at:
rpkrehling@verizon.net

Wanted: Full Size Bandsaw
Contact Jeff Greene at:
jeff_greene@bmc.com

Have something you are looking for? Want to get rid of something you are no longer using? Then this is the place to let folks know. The cost is FREE, now how can you beat that?! Send me your text and picture, if it applies, and we'll add it here! Send to: debra@thedebs.com please include "CAT" in the subject line - or see me at a meeting, thanks!

Meeting Information

All Catoctin Area Turner meetings are held at the Beautiful Banshee Reeks Nature Preserve. We meet the second Thursday of the month and start at 6:30 at the Education Annex across from the visitor center within the Preserve.

From Leesburg, BRNP can be reached by going south on US15 towards Warrenton *only about a quarter mile from the Leesburg Bypass and then *make a left on Evergreen Mills Rd. (Route 621) and travel south *about 5.3 miles*. After passing the entrance to the Loudoun County Landfill on the right, take the next right, Woods Road and travel about a mile to the entrance to the park on the left. Woods Road is gravel but passable for all types of vehicles. *Once in the Preserve,* stay on the paved road until reaching the parking for the visitor center and annex on the left. The Education Annex is the white building to the right of the large stone Visitor Center. The Annex entrance is on the back side of the building. Look forward to seeing you there.

From Gilbert's Corner, drive north on Rt 15 for 4.3 miles and turn right on Oatlands Mill Road. Go straight across Gleedsville Road and watch for the park entrance on the right.

From the southeast, take Rt 50 west to Evergreen Mill Road and turn right. Follow Evergreen Mill Road about 8 miles to The Woods Road and turn left. The park entrance will be about a mile along on the left.

Banshee Reeks Nature Preserve is located at:
21085 The Woods Road
Leesburg, VA 20175
703-737-7843

<http://www.loudoun.gov/Default.aspx?tabid=884>
<http://www.bansheereeks.org/>

